

ACCESS 25 METROPOLITAN DISTRICT NOS. 1-6

December 15, 2023

Weld County
Office of the Clerk and Recorder
1402 N 17th Ave.
Greeley, CO 80631

Via Email: crstaff@weldgov.com

Weld County
Office of the Assessor
1400 N. 17th Avenue
Greeley, CO 80631

Via Email: assessor@co.weld.co.us

Division of Local Government
1313 Sherman Street, Room 521
Denver, CO 80203

Via E-Filing Portal
Access 25 Metropolitan District Nos. 1-6

Dear Sir or Ma'am:

As required by statute C.R.S. 32-1-306 and 32-1-104, all Title 32 Special Districts are required to annually file a current, accurate map of the District's boundaries with the County Clerk and Recorder, Assessor, and Division of Local Government.

Please be advised that the boundary of the above-referenced District did change in 2023. On behalf of Access 25 Metropolitan District Nos. 1-6, please accept the attached updated District boundary map.

Please feel free to contact me with any questions or concerns.

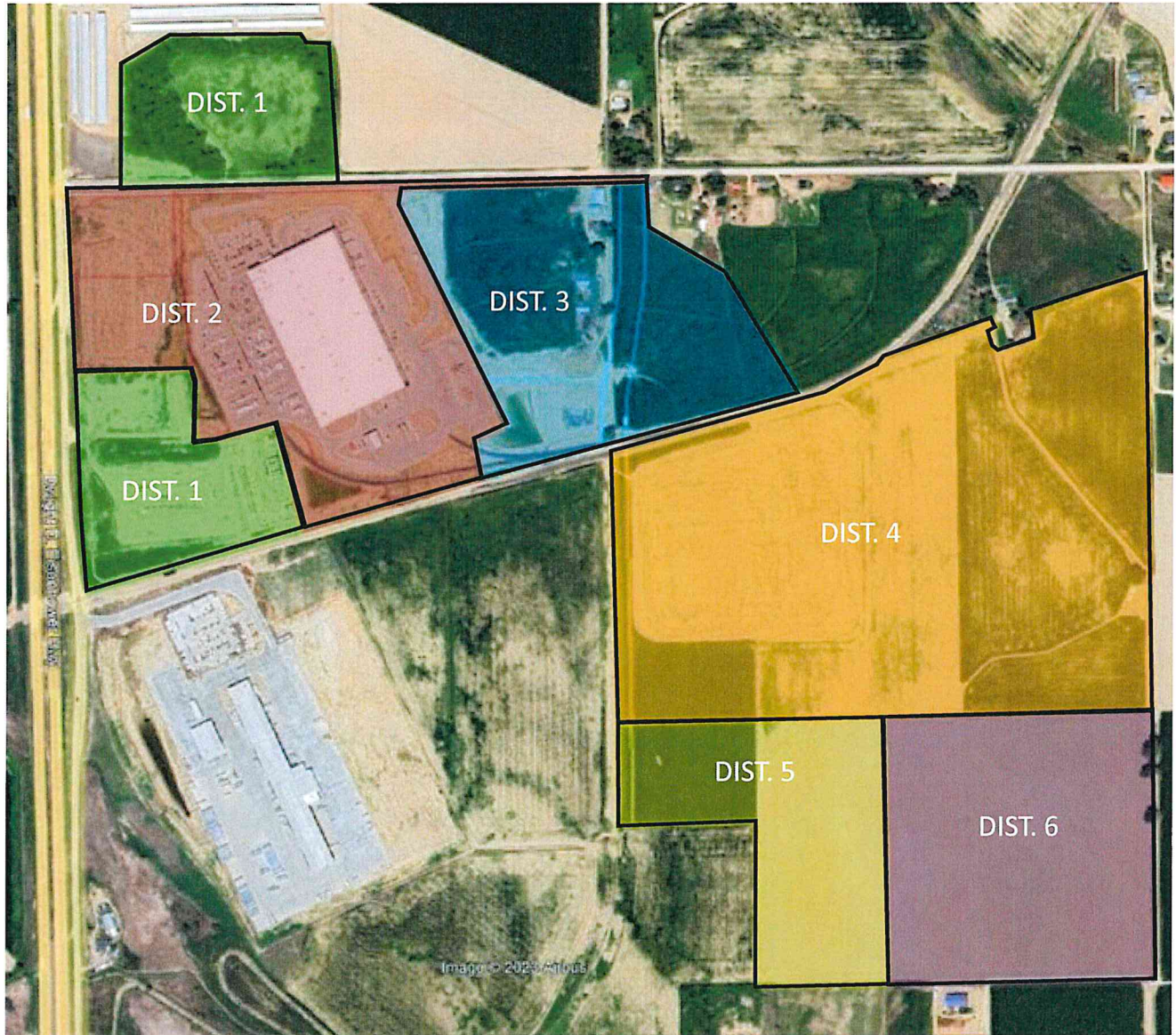
Sincerely,

ACCESS 25 METROPOLITAN DISTRICT NOS. 1-6

Jenna Pettit
District Administrator

Professionally Managed by:
Pinnacle Consulting Group, Inc.
550 W. Eisenhower, Loveland, CO 80537
Phone: 970-669-3611 | FAX: 970-669-3612
District Email: info@access25md.live
District Website: www.access25md.live

ACCESS 25 METRO DISTRICT
ANTICIPATED BOUNDARY EXHIBIT
FOLLOWING SEPTEMBER 7, 2023 HEARING



ACCESS 25 METRO DISTRICT AREAS

- DIST. 1 = 34.072 AC
- DIST. 2 = 55.175 AC
- DIST. 3 = 38.353 AC
- DIST. 4 = 102.181 AC
- DIST. 5 = 26.773 AC
- DIST. 6 = 40.091 AC
- TOTAL DIST. 1 – 6 = 296.645 AC



NOTE: THIS EXHIBIT IS FOR INFORMATION ONLY AND IS NOT A LEGAL SURVEY