

**ACCESS 25 METROPOLITAN DISTRICT NOS. 1-6**  
**c/o Pinnacle Consulting Group, Inc.**  
**550 W. Eisenhower Blvd. | Loveland, CO 80537**  
**Phone: 970-669-3611 FAX: 970-669-3612**

December 23, 2020

Weld County  
Office of the Clerk and Recorder  
1402 N 17<sup>th</sup> Ave.  
Greeley, CO 80631

**VIA EMAIL:** ckoppes@weldgov.com  
cc: weld-districts@weldgov.com

Weld County  
Office of the Assessor  
1400 N. 17<sup>th</sup> Avenue  
Greeley, CO 80631

**VIA EMAIL:** bdone@weldgov.com  
cc: assessor@weldgov.com

Division of Local Government  
1313 Sherman Street, Room 521  
Denver, CO 80203

**Via E-Filing Portal**  
Access 25 Metropolitan District No. 1  
Access 25 Metropolitan District No. 2  
Access 25 Metropolitan District No. 3  
Access 25 Metropolitan District No. 4  
Access 25 Metropolitan District No. 5  
Access 25 Metropolitan District No. 6

Dear Sir or Ma'am:

As required by statute (C.R.S. 32-1-306) and 32-1-104 (3)(b), all Title 32 Article 1 special districts are required to file a current, accurate map of district boundaries with the County Clerk and Recorder, Assessor and Division of Local Government. On behalf of **Access 25 Metropolitan District Nos. 1-6** please accept the attached updated District boundary map. The District(s) are wholly located within Weld County.







Please feel free to contact me with any questions or concerns.

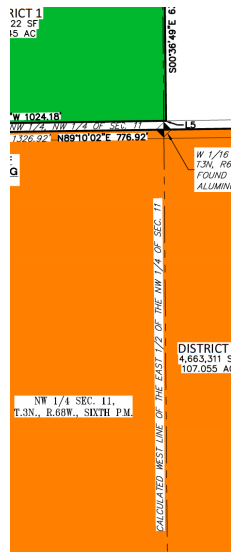
Sincerely,

**ACCESS 25 METROPOLITAN DISTRICT NOS. 1-10**

Bryan Newby  
Assistant District Manager

T  
 2 & SECTION 11,  
 L MERIDIAN,

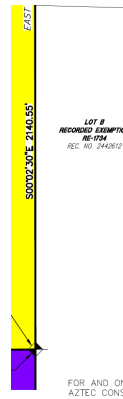
DISTRICT LEGEND			
	DISTRICT 1		DISTRICT 4
	DISTRICT 2		DISTRICT 5
	DISTRICT 3		DISTRICT 6



LOT 2, BLOCK 1  
 REFORMED USE  
 FINAL PLAT  
 REC. NO. 456239

POINT  
 COMMENCEM  
 DISTRICT  
 C 1/4 CORNER, SECTION  
 T3N, R66W, 6TH  
 SET NO. 6 REBAR  
 2-1/2" ALUMINUM  
 STAMPED "A"  
 CONSULTANTS PLS. 35

SEE SHEET 2

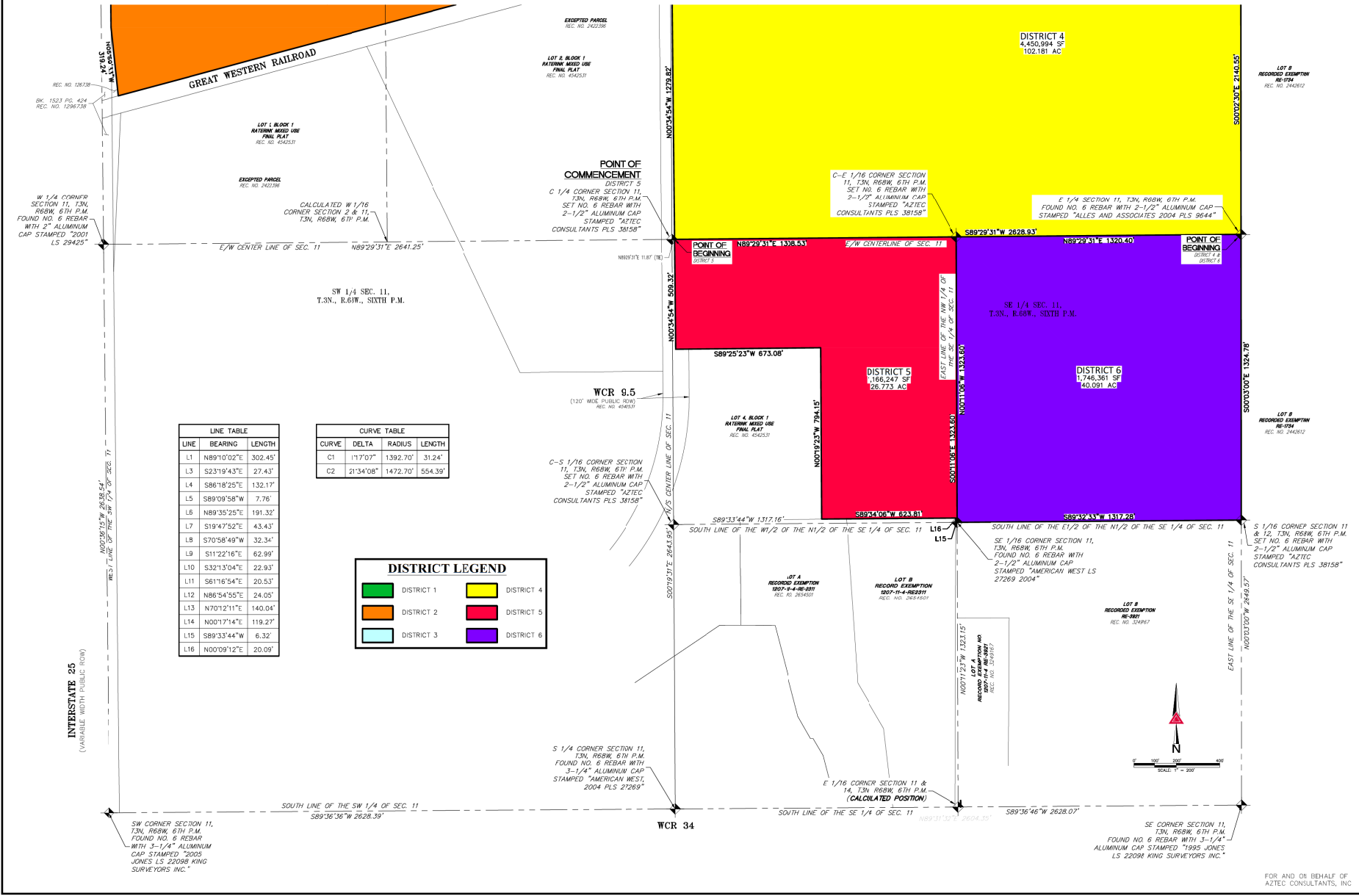


# DISTRICT MAPPING EXHIBIT

SIX (6) PARCELS LOCATED IN THE SOUTHWEST QUARTER OF SECTION 2 & SECTION 11,  
TOWNSHIP 3 NORTH, RANGE 68 WEST OF THE SIXTH PRINCIPAL MERIDIAN,  
COUNTY OF WELD, STATE OF COLORADO

SEE SHEET 1

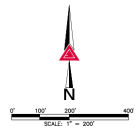
SEE SHEET 1



LINE	BEARING	LENGTH
L1	N89°10'02"E	302.45'
L3	S23°19'43"E	27.43'
L4	S86°18'25"E	132.17'
L5	S89°09'58"W	7.76'
L6	N89°35'25"E	191.32'
L7	S19°47'52"E	43.43'
L8	S70°58'49"W	32.34'
L9	S11°22'16"E	62.99'
L10	S32°13'04"E	22.93'
L11	S61°16'54"E	20.53'
L12	N86°54'55"E	24.05'
L13	N70°12'11"E	140.04'
L14	N00°17'14"E	119.23'
L15	S89°33'44"W	6.32'
L16	N00°09'12"E	20.09'

CURVE	DELTA	RADIUS	LENGTH
C1	177°07'	1392.70'	31.24'
C2	21°34'08"	1472.70'	554.39'

DISTRICT LEGEND	
	DISTRICT 1
	DISTRICT 2
	DISTRICT 3
	DISTRICT 4
	DISTRICT 5
	DISTRICT 6



SCALE	1" = 200'
DATE	2022-01-25
BY	
REVISION DESCRIPTION	

**AZTEC**  
CONSULTANTS, INC.

300 East Mineral Ave., Suite 1  
Littleton, Colorado 80122  
Phone: (303) 711-3398  
Fax: (303) 711-3398  
www.aztecconsultants.com

**DISTRICT MAPPING EXHIBIT**  
SEC. 2 & SEC. 11, T.3N., R.68W., 6TH P.M.  
WELD COUNTY, COLORADO

PREPARED FOR